

Capacitors: Type **KNB 2520**
2522
2523

250 V AC

class Y2

TECHNICAL DATA:

Construction: polypropylene film, metallized
Rated voltage: 250 V A.C.
Capacitance tolerance: ±20%, ±10%
Climatic category: 40/100/56 according to IEC, publ. 68-1
Passive flammability: according to EN 132 400
Temperature range: -40°C to +100°C
Test voltage: 4000 V D.C., 1 s
or 2600 V A.C., 2 s

Max. pulse rise time du/dt, at 353 V D.C.:
3000V/μs for 1000pF
2500V/μs for 1500pF
2000V/μs for 2200pF to 5000pF
1000V/μs for 6800pF to 22000pF

Insulation resistance at 20°C, U_m = 100 V D.C., t = 1 min: R_i ≥ 15000 MΩ

Dielectric loss tanδ at f = 1 kHz and 20°C: ≤ 15 x 10⁻⁴

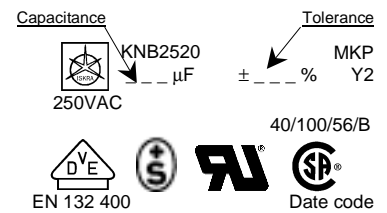
Soldering: IEC publ. 68-2-20, max 2 s

Soldering time on printed circuit: max. 5 s at 270°C
Self inductance: approx. 10 nH/cm of capacitor length and terminals

Complies to: IEC publ. 384-14; EN 132 400, UL 1283, UL 1414, CSA C22.2 No.1, CSA C22.2 No.8,

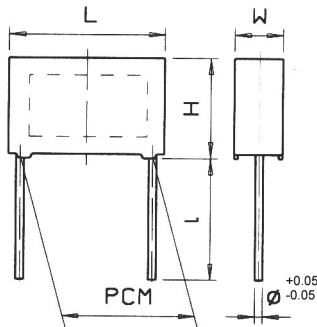


Marking KNB2520:

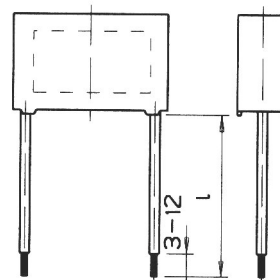


Note: Capacitance tolerance ±20% is not marked.

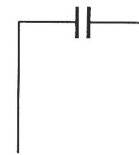
KNB2520



KNB2522, 2523



Electrical connection








Casing: thermoplastic, sealed with synthetical resin

Thermoplastic material is self extinguishing according to UL94, class V-0.

Terminals:

Type	Terminal length	Type of terminals
KNB2520	4±0.5, 6-1, 25±5 mm, other on request	Tinned copper wire
KNB2522	20 to 200 mm	Insulated stranded wire 0.5 mm ²
KNB2523	20 to 200 mm	Insulated solid wire φ0.8 mm End terminals on request

Standard values: KNB2520, KNB2522, KNB2523
250 V AC class Y2

Capacitance C(pF)	Dimensions					 EN 132 400 250V AC	For capacitors with insulated leads on request			
	Lmax (mm)	Hmax (mm)	Wmax (mm)	PCM (mm)	φ (mm)		 UL 1283 275V AC	 UL 1414 250V AC	 C22.2 No.1 250V AC	 C22.2 No.8 275V AC
1000	13	9.5	4.3	10	0.6	•	•	•	•	•
1500	13	9.5	4.3	10	0.6	•	•	•	•	•
2200	13	9.5	4.3	10	0.6	•	•	•	•	•
2700	13	9.5	4.3	10	0.6	•	•	•	•	•
2800	13	9.5	4.3	10	0.6	•	•	•	•	•
3300	13	10.5	5	10	0.6	•	•	•	•	•
4700	13	11.5	6	10	0.6	•	•	•	•	•
5000	13	11.5	6	10	0.6	•	•	•	•	•
6800	18	11	5.5	15	0.8	•	•	•	•	•
10000	18	11	5.5	15	0.8	•	•	•	•	•
15000	18	12	6	15	0.8	•	•	•	•	•
22000	18	13	7	15	0.8	•	•	•	•	•

Approvals in use = •

Approvals in pending = o